



SOWPARNIKA
Delivering Happiness



PERMIT NO. UE2/BA/336/14

SEYCHELLES

Sreekaryam (Behind CET), Trivandrum

**A Home With a View
That Completes Your World**



SEYCHELLES

We Deliver Happiness. Everyday.

Sowparnika is not just any other real estate company. It is probably the first to bring the concept of Lean Six Sigma across all the processes in the company. Which means you'll get your projects delivered on time. You will get better value considering that we maximise efficiencies and we pass the benefits on to our customers. At Sowparnika we believe in sensible pricing. Our commitment is based on the strongly grounded principles of Transparency, Customer Satisfaction and Teamwork. We have 6000+ satisfied customers, 35+ completed projects, 35+ ongoing projects, 50+ lakh sq.ft developed, 50+ lakh sq.ft under development and a strong presence in 3 states namely Karnataka, Tamil Nadu and Kerala. And we have only just begun.

Specifications

Structure:

- RCC framed structure with concrete block masonry

Flooring:

- Vitrified Tile: Living, Dining and Kitchen
- Anti-skid Ceramic Tiles: Toilet and Balconies

Kitchen:

- Granite top & Single bowl sink
- Glazed tiles above the counter to a height of 2 feet
- Provision for Chimney
- Provision for water purifier

Toilet:

- Anti-skid ceramic tiles for flooring
- Glazed tiles for dadoing
- CP Fitting and sanitary ware of reputed make

Doors:

- Main Door : Hardwood Frames with wooden shutter with melamine Polish
- Internal Doors : Hardwood Frames with flush shutter
- Toilet Doors : PVC frames and PVC shutters

Window:

- 2 Track UPVC Windows with glazed shutters and provision for mosquito mesh

Electrical:

- Concealed conduits wiring with fire resisting cables
- Elegant modular switches controlled by ELCB and MCB with independent KSEB Meter

Generator:

- 24 Hours Generator backup for elevator, common lighting & apartment through limiter switch (0.5kV)

Painting:

- Internal : Reputed make emulsion paint
- External : Weather proof paint

Elevator:

- Elevators of Reputed make

Water Supply:

- Borewell / Municipal water

Air Conditioning:

- Provision for fixing AC in master bedroom

SEYCHELLES

Amenities

Swimming Pool with Toddlers pool, Health Club Multipurpose Gym, Club House with Multipurpose Hall and Indoor Games, Children Play Area, Landscaped Garden, 24 Hrs. Power Backup for Common Area and 0.5 kVA for Apartment Through Limiter Switch, Round the Clock Security, Waste Management System, Wi-Fi Enabled through Service Provider, Intercom to Apartment from Security Cabin through Service Provider, Sewage Treatment Plant (STP), Lifts of Reputed Make, Covered Car Parking, Rain Water Harvesting, Visitors Lobby.

Uniquely Designed, Beautifully Proportioned and Distinctly Striking Offers 149, 2 & 3 BHK Apartments in B + G + 5 Floors. The Homes Range from 747 sq.ft to 1124 Sq.Ft in size, fully Vastu Compliant and packed with Unparalleled Features. Sowparnika Seychelles Prides itself in offering a host of delightful leisure amenities like Swimming Pool, Health Club, Kids Play Area, Landscaped Garden and more. In all, a Sowparnika Seychelles home promises you a life full of abundant happiness.

Come and Experience it!



SEYCHELLES

Ground Floor Plan

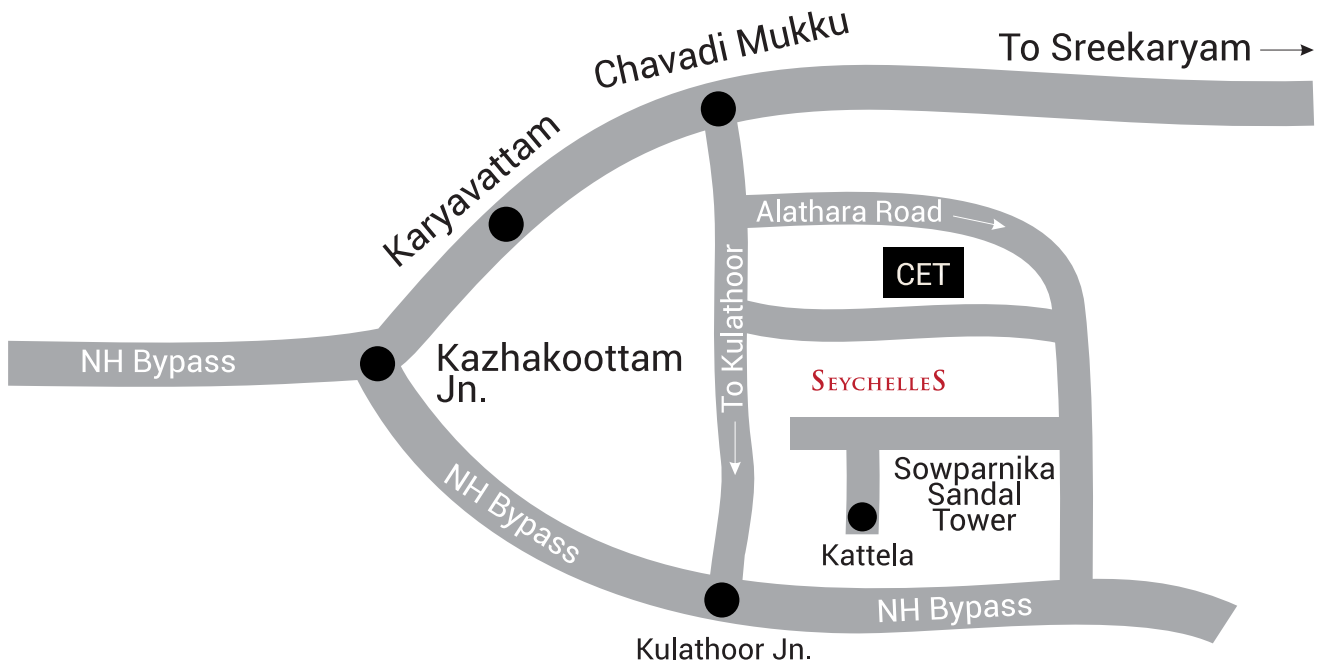






SEYCHELLES

Location Map



Living at the right location has a huge impact on the quality of life. Sowparnika Seychelles, Which is Located Behind CET, Near The Techpark and Kerala IT Hub Provides Easy Access to Every Part of the Capital City. Living Here, One can Commute both to work and play with ease. Further the kids can be sent to any of the fine educational institutions close by.

Connectivity

Airport	: 08 km	Thambanoor	: 11 km
Technopark	: 06 km	Akkulam Lake	: 03 km
Infosys	: 04 km	Kims Hospital	: 05 km
CET	: 01 km	Medical College	: 05 km
Proposed Lulu Mall	: 04 km	Sreekaryam	: 03 km
Kochuveli	: 06 km	Greenfield Stadium	: 4.5 km

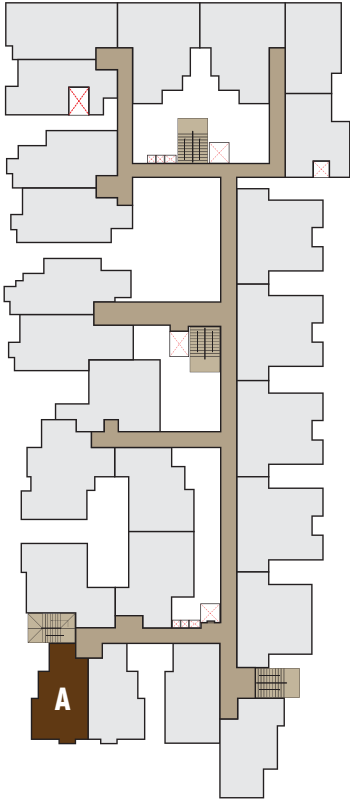
SEYCHELLES

Unit Plans

Type A : 2 BHK
Saleable Area : 747 Sq.ft
Floors : GF to 5th



Key Plan



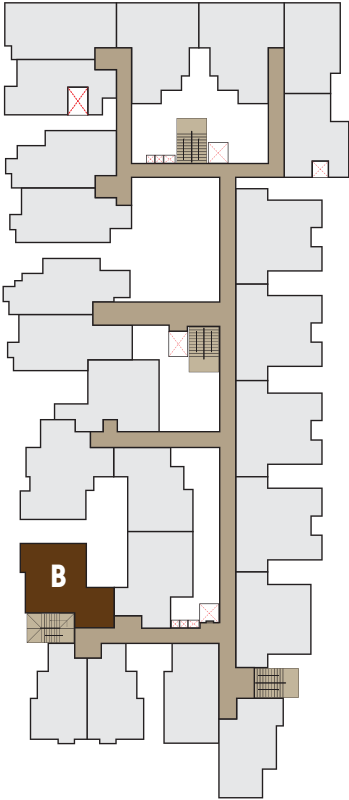
SEYCHELLES

Unit Plans

Type B : 2 BHK
Saleable Area : 1044 Sq.ft
Floors : GF to 5th



Key Plan



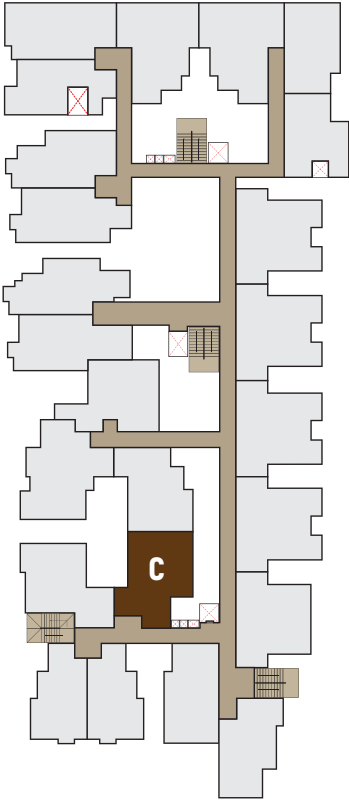
SEYCHELLES

Unit Plans

Type C : 2 BHK
Saleable Area : 906 Sq.ft
Floors : GF to 5th



Key Plan



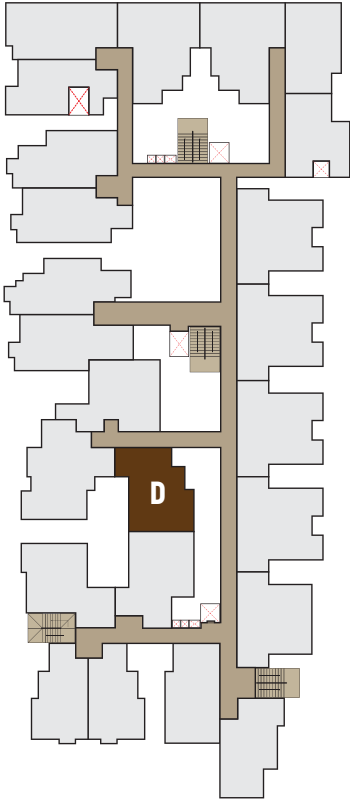
SEYCHELLES

Unit Plans

Type D : 2 BHK
Saleable Area : 906 Sq.ft
Floors : GF to 5th



Key Plan



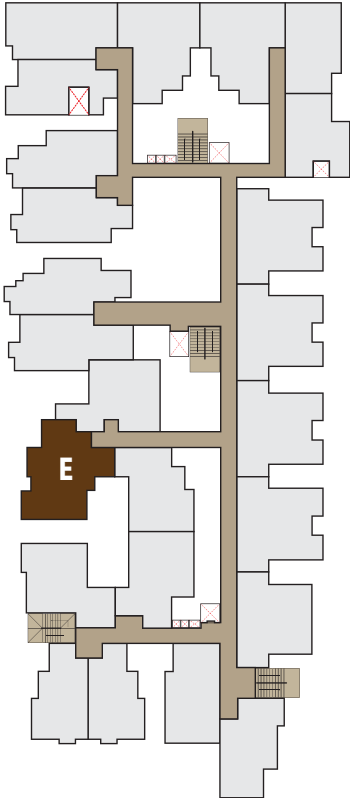
SEYCHELLES

Unit Plans

Type E : 3 BHK
Saleable Area : 1116 Sq.ft
Floors : GF to 5th



Key Plan



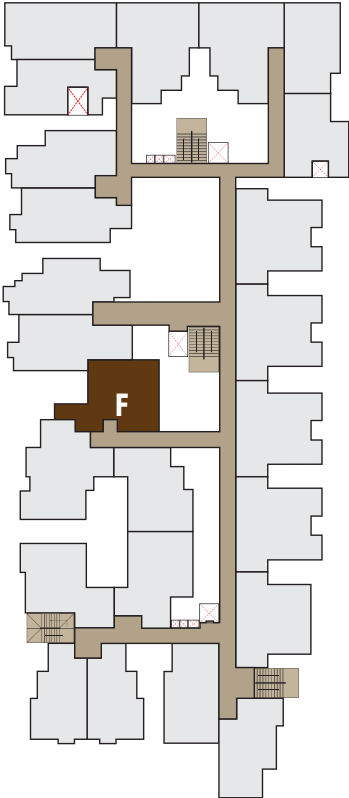
SEYCHELLES

Unit Plans

Type F : 2 BHK
Saleable Area : 932 Sq.ft
Floors : GF to 5th



Key Plan



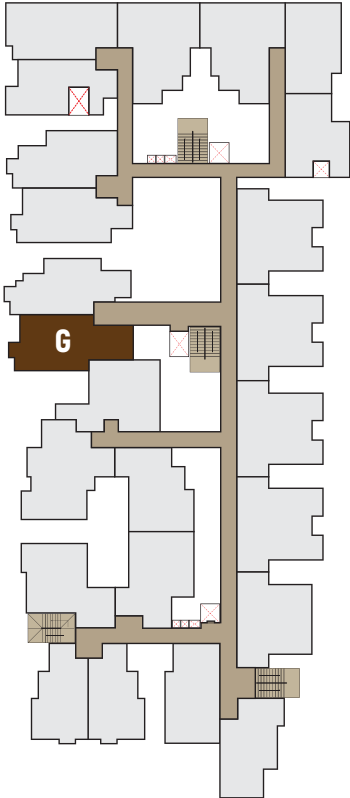
SEYCHELLES

Unit Plans

Type G : 2 BHK
Saleable Area : 942 Sq.ft
Floors : GF to 5th



Key Plan



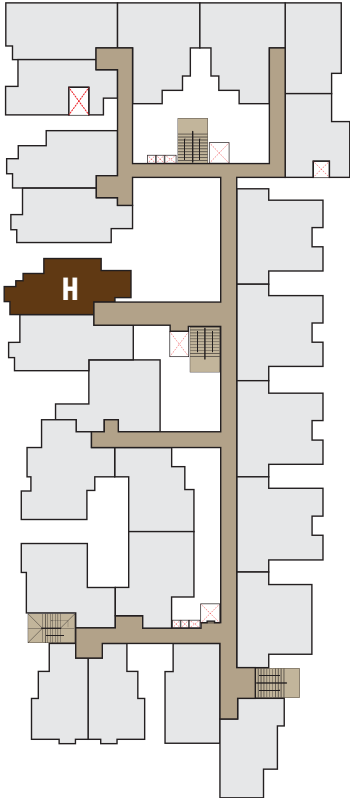
SEYCHELLES

Unit Plans

Type H : 2 BHK
Saleable Area : 936 Sq.ft
Floors : GF to 5th



Key Plan



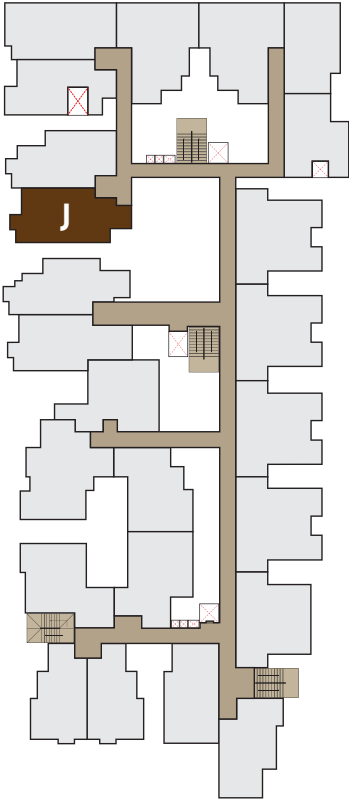
SEYCHELLES

Unit Plans

Type J : 2 BHK
Saleable Area : 956 Sq.ft
Floors : GF to 5th



Key Plan



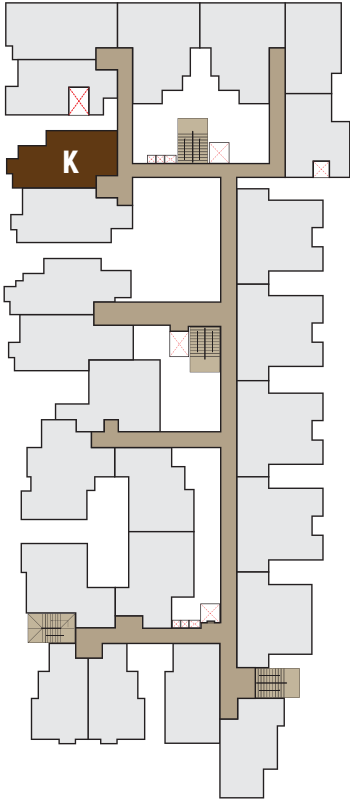
SEYCHELLES

Unit Plans

Type K : 2 BHK
Saleable Area : 851 Sq.ft
Floors : GF to 5th



Key Plan



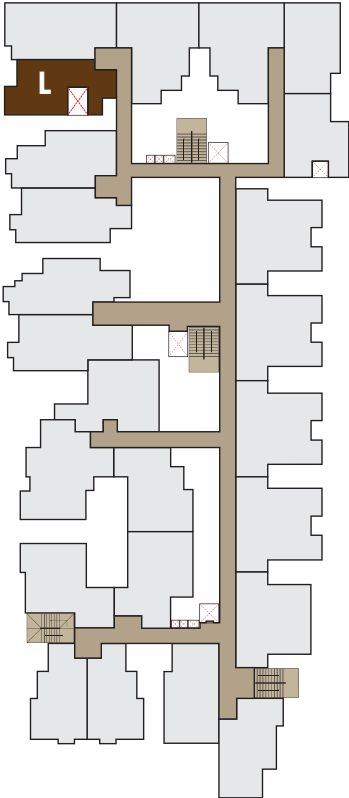
SEYCHELLES

Unit Plans

Type L : 2 BHK
Saleable Area : 810 Sq.ft
Floors : Upper Basement to 5th



Key Plan



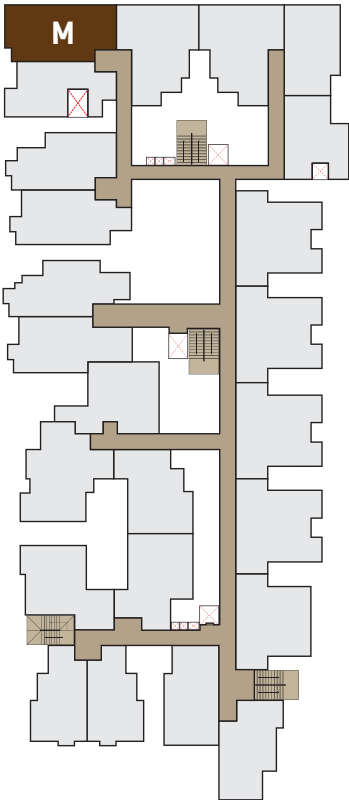
SEYCHELLES

Unit Plans

Type M : 2 BHK
Saleable Area : 995 Sq.ft
Floors : Upper Basement to 5th



Key Plan



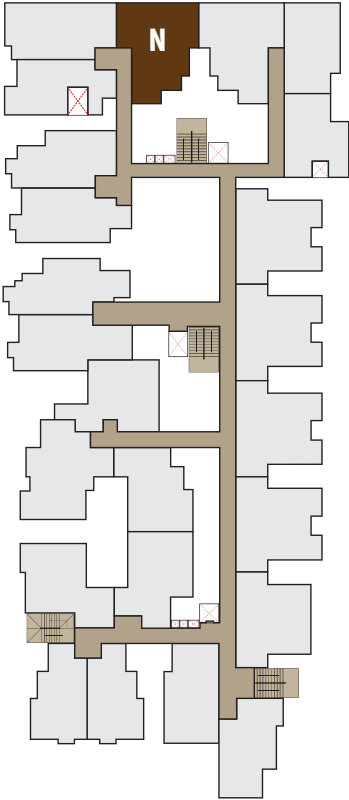
SEYCHELLES

Unit Plans

Type N : 3 BHK
Saleable Area : 1092 Sq.ft
Floors : Upper Basement to 5th



Key Plan



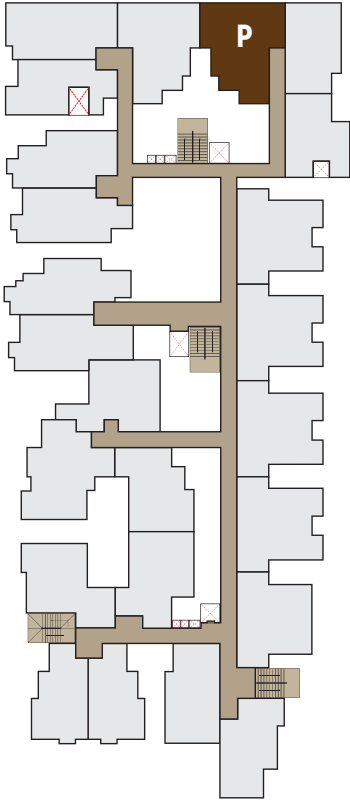
SEYCHELLES

Unit Plans

Type P : 3 BHK
Saleable Area : 1092 Sq.ft
Floors : Upper Basement to 5th



Key Plan



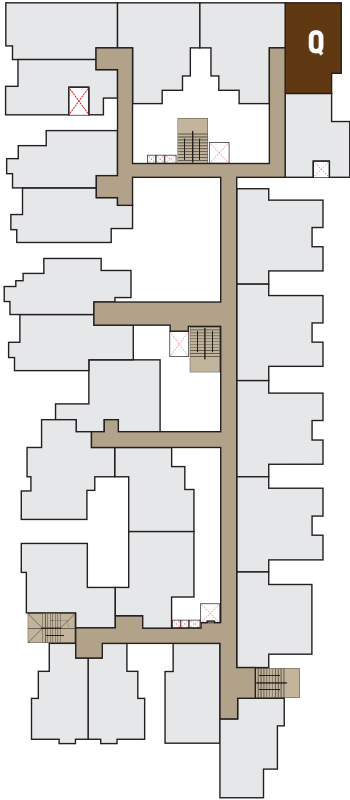
SEYCHELLES

Unit Plans

Type Q : 2 BHK
Saleable Area : 812 Sq.ft
Floors : Upper Basement to 5th



Key Plan



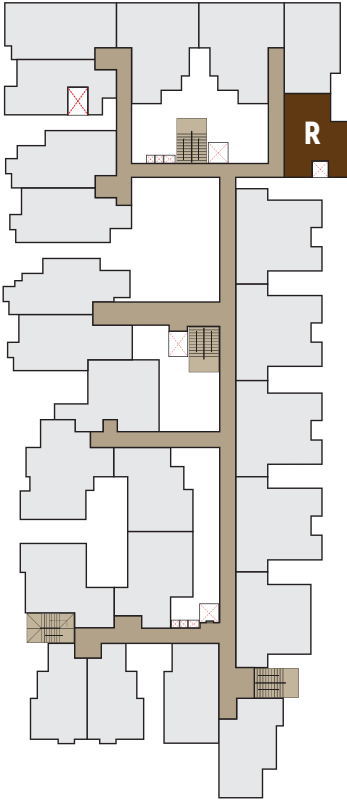
SEYCHELLES

Unit Plans

Type R : 2 BHK
Saleable Area : 769 Sq.ft
Floors : Upper Basement to 5th



Key Plan



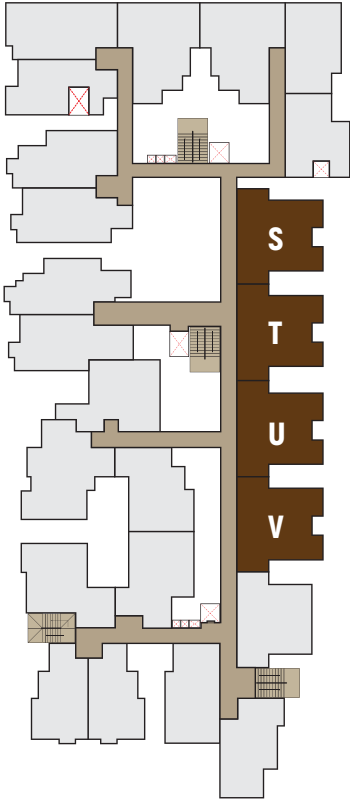
SEYCHELLES

Unit Plans

Type S / T / U / V : 3 BHK
Saleable Area : 1124 Sq.ft
Floors S / T / U : GF to 5th
Floor V : 1st to 5th



Key Plan



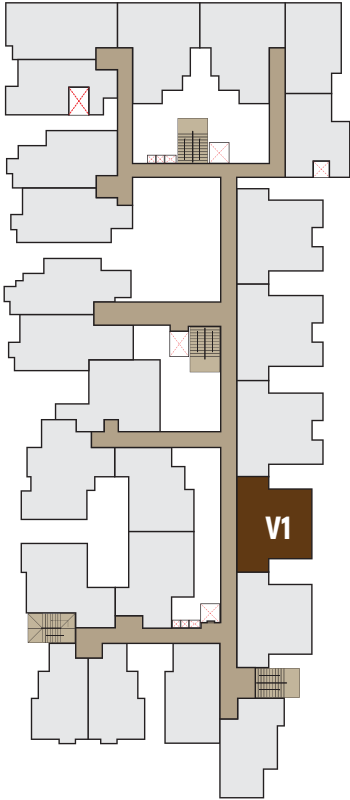
SEYCHELLES

Unit Plans

Type V1 : 3 BHK
Saleable Area : 1021 Sq.ft
Floors : GF to 5th



Key Plan



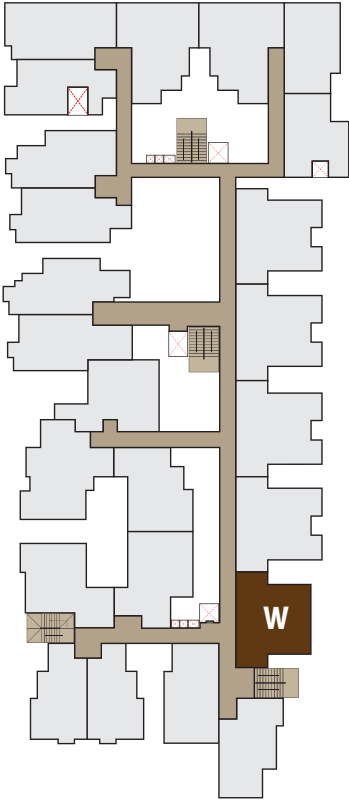
SEYCHELLES

Unit Plans

Type W : 3 BHK
Saleable Area : 1021 Sq.ft
Floors : GF to 5th



Key Plan



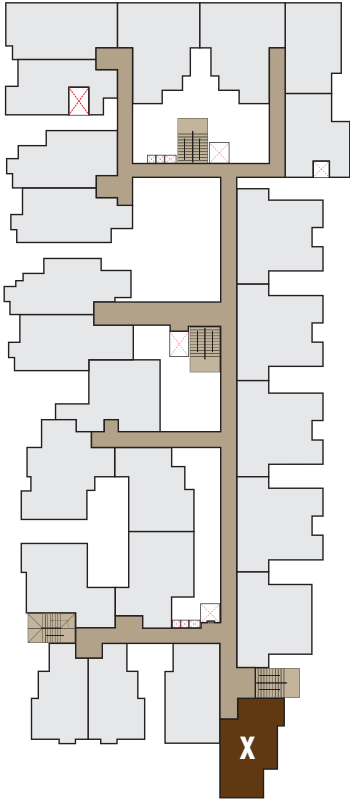
SEYCHELLES

Unit Plans

Type X : 3 BHK
Saleable Area : 847 Sq.ft
Floors : GF to 5th



Key Plan



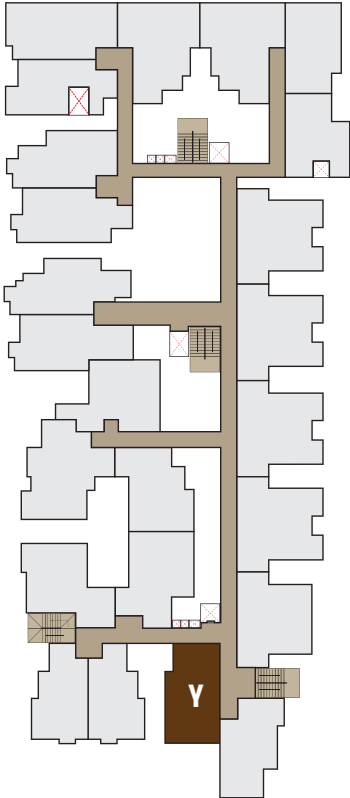
SEYCHELLES

Unit Plans

Type Y : 2 BHK
Saleable Area : 906 Sq.ft
Floors : GF to 5th



Key Plan



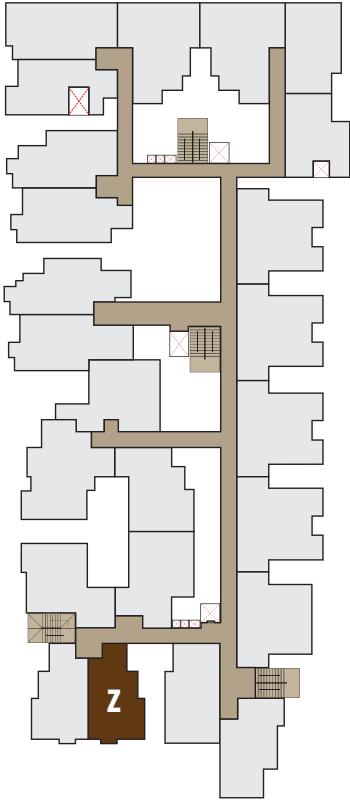
SEYCHELLES

Unit Plans

Type Z : 2 BHK
Saleable Area : 752 Sq.ft
Floors : GF to 5th



Key Plan



SEYCHELLES



Value Creation

Turnkey Delivery - From Design to Execution



Silicon India with LICHFL



Brands Academy Awards



Indian Achievers' Podium



ET Now



ET Now



NDTV Profit Real Estate Award



Junior Chamber International Kottayam



Kerala Financial Corporation Trivandrum

78290 81212

Sowparnika Seychelles, Behind CET, Alathara, Sreekariyam P.O, Thiruvananthapuram - 695 017.

6000+ SATISFIED CUSTOMERS

35+ COMPLETED PROJECTS

35+ ONGOING PROJECTS

50+ LAKH SQ. FT. DEVELOPED

50+ LAKH SQ. FT. UNDER DEVELOPMENT

3 STATES PRESENCE